

PA-12

General purpose sensor controller

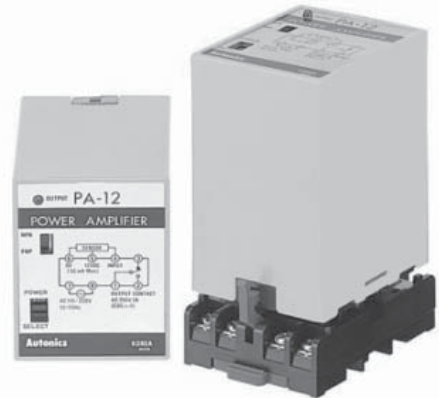
■ Features

- Selectable use of 110/220VAC
- Selectable use of NPN, PNP input
- Able to drive loads up to 3A, 250VAC with proximity sensor or photo sensor input
- Convenient to mount on socket by plug in type
- Output relay with both N.O. and N.C. contacts

⚠ Please read "Caution for your safety" in operation manual before using.

■ Ordering information

PA	—	12	
Item		Power supply	12 Selectable 110/220VAC 50/60Hz
		PA	Power amplifier

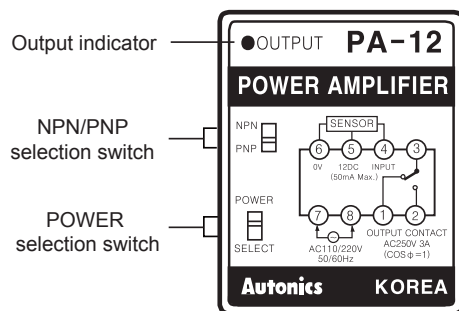


■ Specifications

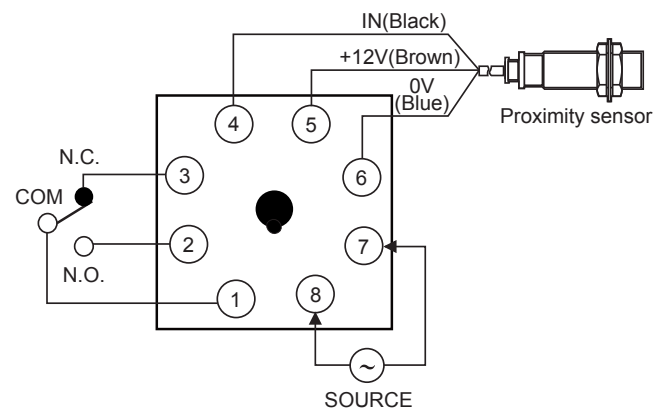
Model		PA-12
Type		Selectable NPN/PNP
Power supply		Selectable 110/220VAC 50/60Hz
Power consumption		Approx. 4VA
Power for external sensor		12VDC 50mA
Input signal	PNP	High level : 7-12VDC, Low level : 0-5VDC
	NPN	Short-circuit impedance : Max. 1kΩ, Residual voltage : Max. 2VDC, Open-circuit impedance : Min. 100kΩ
Response time	Input	Min. 0.2ms
	Output	Min. 10ms
Input resistance		10kΩ
Control/output	Contact composition	SPDT(1a1b)
	Contact capacity	250VAC 3A(For resistive load)
Environment	Ambient temperature	-10 to 50°C
	Ambient humidity	35 to 85%RH
Relay life cycle	Mechanical	Min. 10,000,000 operations
	Electrical	Min. 100,000 operations(250VAC 3A resistive load)
Unit weight		Approx. 269g

※ Environment resistance is rated at no freezing or condensation.

■ Front panel identification

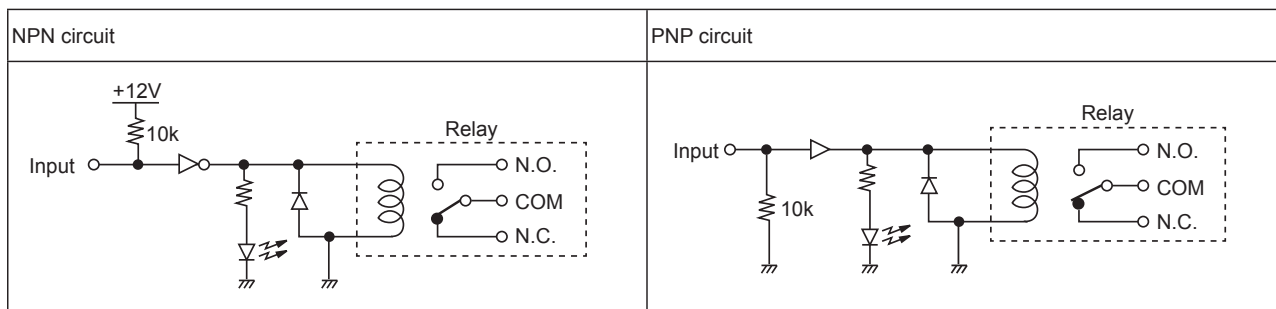


■ Connections



Sensor Controller

Function diagram

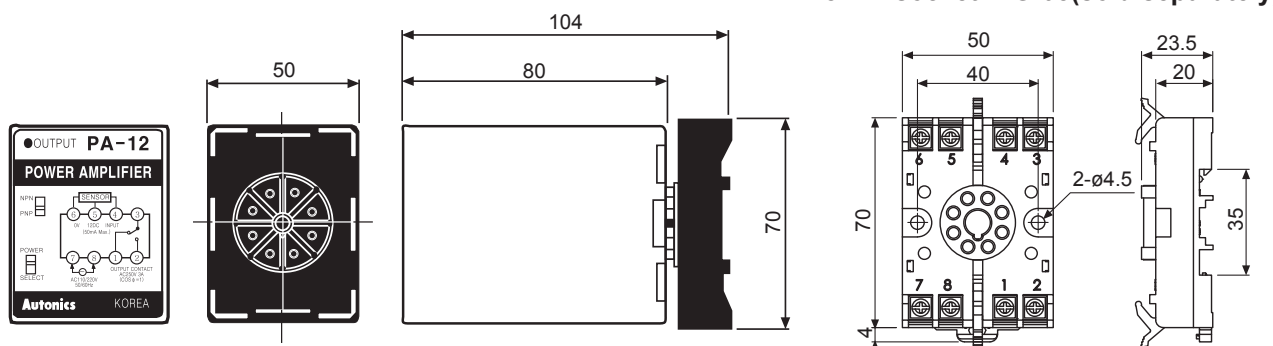


Operation mode

Input	NPN	PNP
Input level		
Relay output		
LED		

Dimensions

(unit: mm)



Proper usage

1. Power selection switch is set according to power voltage.
2. Please check connections before wiring.
3. Please be cautious not to short-circuit the 12VDC terminal at GND.
4. Do not install this unit at place where steam, dust, corrosive gas and water exist.

(A) Photo electric sensor
(B) Fiber optic sensor
(C) Door/Area sensor
(D) Proximity sensor
(E) Pressure sensor
(F) Rotary encoder
(G) Connector/Socket
(H) Temp. controller
(I) SSR/Power controller
(J) Counter
(K) Timer
(L) Panel meter
(M) Tacho/Speed/Pulse meter
(N) Display unit
(O) Sensor controller
(P) Switching power supply
(Q) Stepping motor& Driver&Controller
(R) Graphic/Logic panel
(S) Field network device
(T) Software
(U) Other