

Sensors

Sensors are the most essential and commonly used components in automation systems. Autonics provides a wide variety of industrial and commercial sensors, ensuring that the most fundamental parts of automation systems are built with quality and performance.

Vision Sensors

- Color type
- Monochrome type



Photoelectric Sensors

- Standard type
- Compact type
- Ultra-compact type
- Photomicro type
- AC/DC type
- Oil-proof type
- Cylindrical type
- Color mark type
- Liquid level type
- Mirror tape



Area Sensors

- Standard type
- Cross-beam type



Proximity Sensors

- Inductive (standard type)
- Inductive (spatter-resistant type)
- Inductive (full-metal type)
- Inductive (full-metal spatter-resistant type)
- Inductive (rectangular type)
- Capacitive
- Transmission couplers



Fiber Optic Sensors

- Fiber optic amplifiers
- Fiber optic cables



Door Sensors

- Door sensors
- Door side sensors



Pressure Sensors

- Digital display type
- Non-indicating type
- Stainless steel type
- Pressure indicators



Rotary Encoders

- Incremental encoders (optical)
- Incremental encoders (wheel)
- Absolute encoders (optical)
- Absolute encoders (magnetic)
- Couplings



Make Life Easy: **Autonics**

Controllers

Controllers are widely used in various industrial settings to adjust or maintain desired outputs of specific processes within a desired range. Autonics provides a diverse range of highly accurate and reliable controllers for stable and ideal system control.

Temperature Controllers

- Standard type
- Modular type
- Board type
- Thumbwheel switch type
- Refrigeration type
- Temperature indicators
- Temperature/humidity sensors

Solid State Relays

- Single-phase (integrated heatsink)
- Single-phase (detachable heatsink)
- Single-phase (socket type)
- Three-phase (integrated heatsink)
- Three-phase (detachable heatsink)

Power Controllers

- Single-phase power controllers
- Three-phase power controllers

Digital Panel Meters

- Standard type
- High performance type
- Indicator type
- Multi panel meters
- Voltmeters
- Ammeters
- Wattmeters
- Tacho/speed meters
- Scaling meters

Display Units

- High performance type
- Panel type
- 16-segment
- 7-segment

Sensor Controllers

- Sensor controllers

HMI's

- Graphic panels
- Logic panels

Counters

- Standard type
- Built-in battery type

Timers

- Digital timers
- Analog timers

SMPS

- DIN rail mount
- Panel mount

Recorders

- Hybrid recorders
- Paperless recorders
- LCD touchscreen recorders

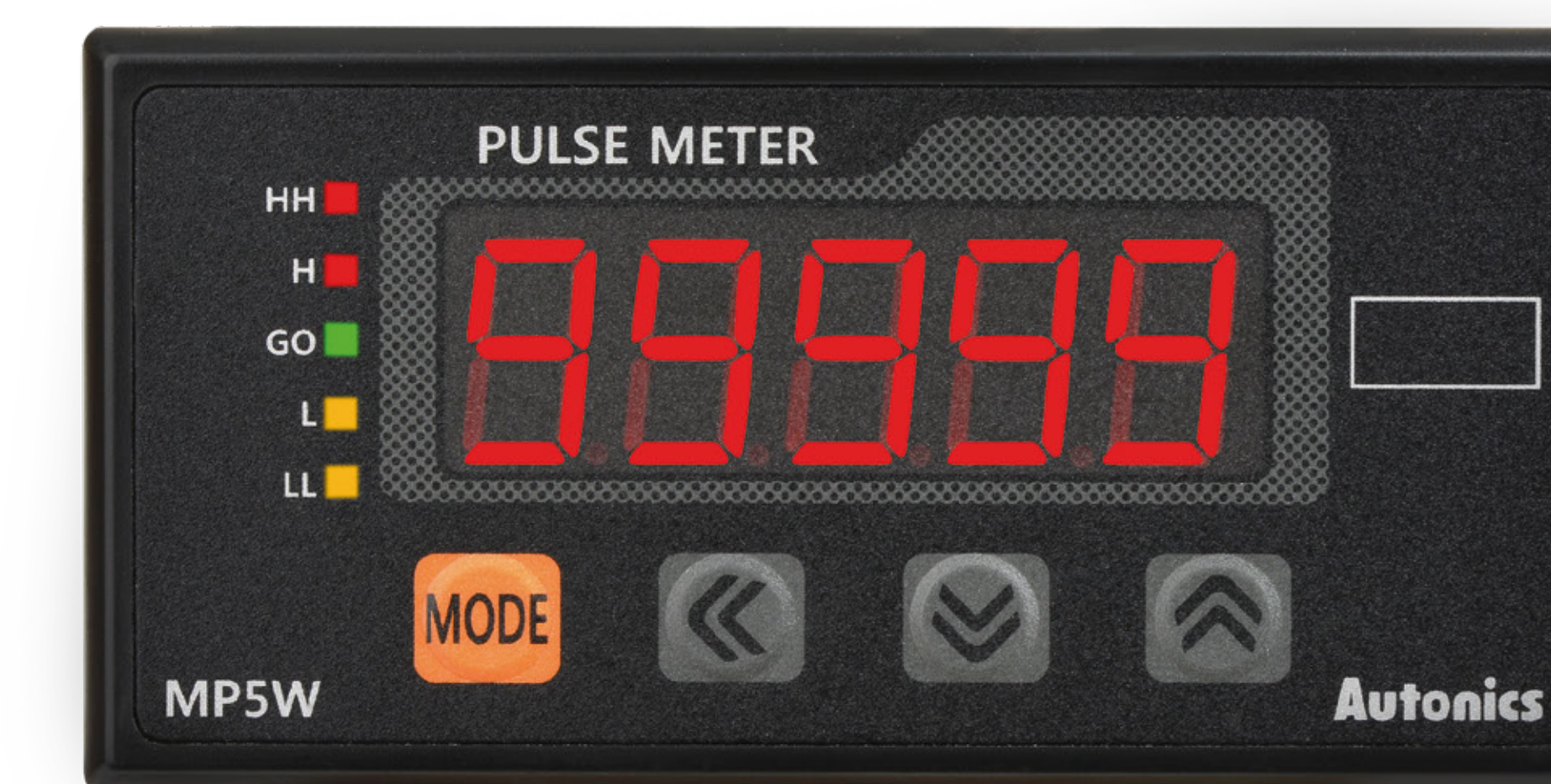
Indicators

- Multi-color indicators
- Digital/bar graph indicators

Converters

- Isolated converters

Make Life Easy: **Autonics**



Motion Devices

Motion control involves automation of moving parts of machines in a controlled manner.

Autonics motion devices, consisting of stepper motors, stepper motor drivers, and motion

controllers, provide comprehensive solutions well-suited for a wide variety of motion applications.



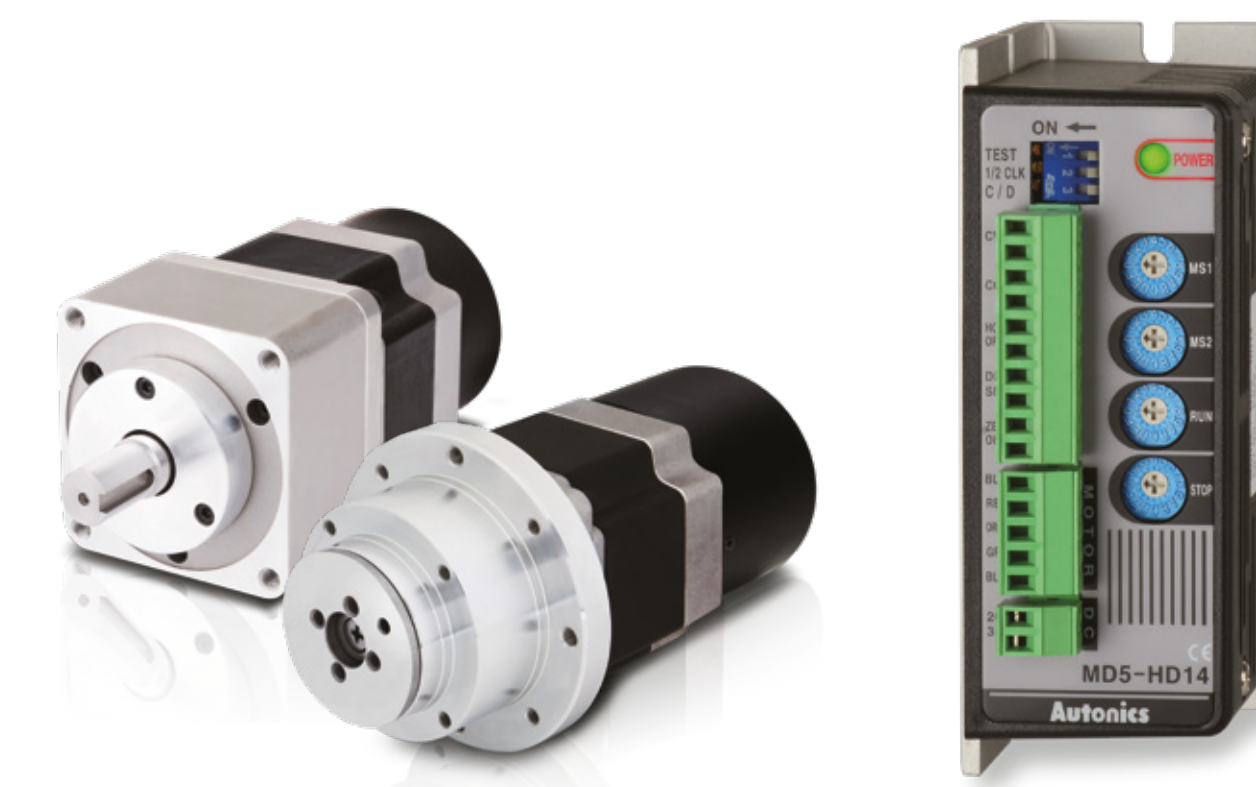
Closed Loop Stepper Motor & Drivers

- Motor+driver system
- Closed loop stepper motors
- Closed loop stepper motor drivers



Motion Controllers

- Stand-alone type
- PCI card type

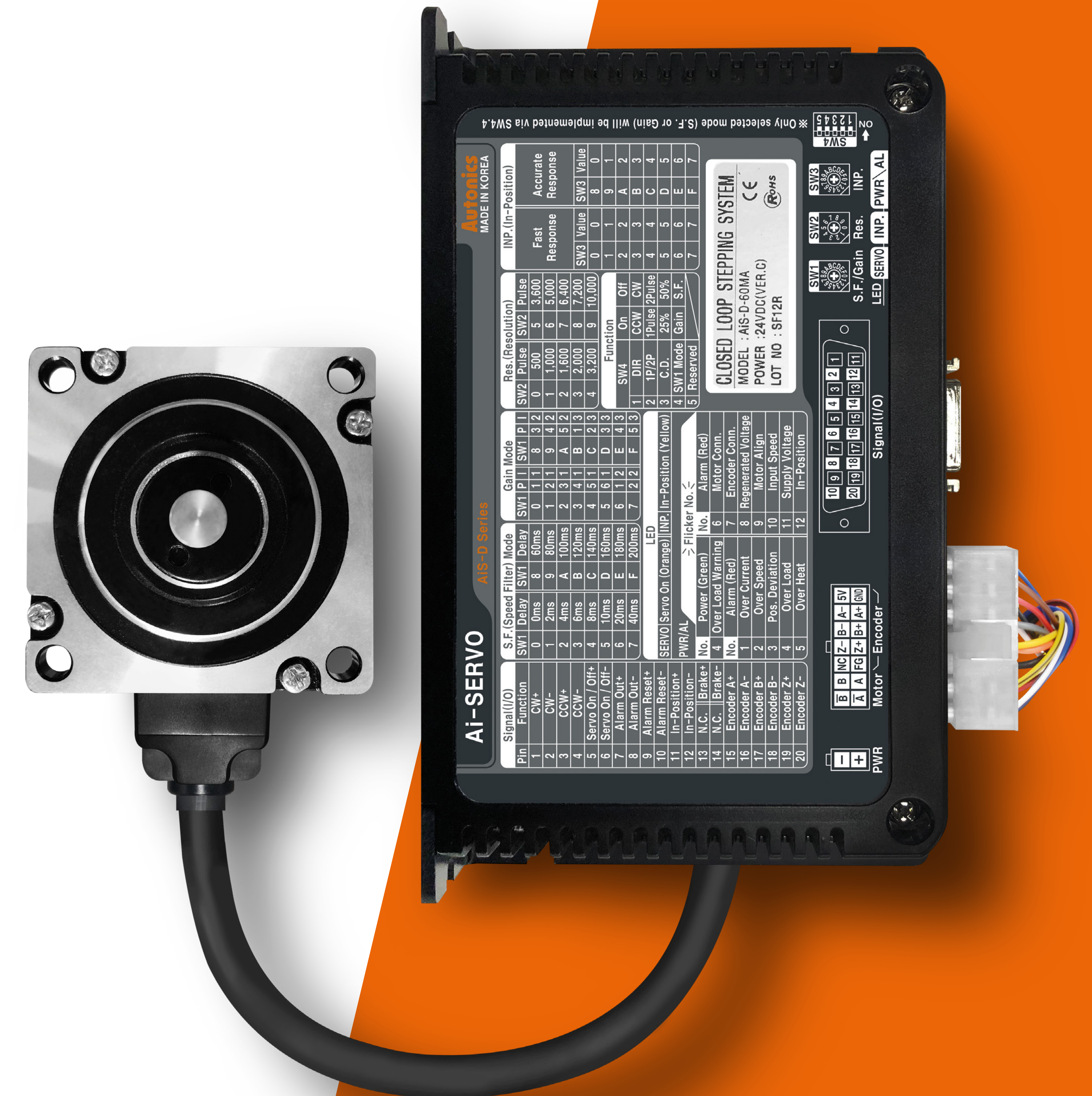


5-Phase Stepper Motor & Drivers

- 5-phase stepper motors
- 5-phase stepper motor drivers

2-Phase Stepper Motor Drivers

- 2-phase stepper motor drivers



Connectivity

Connectivity devices are communication devices used to send and receive signals or data between the environment and information processing systems.

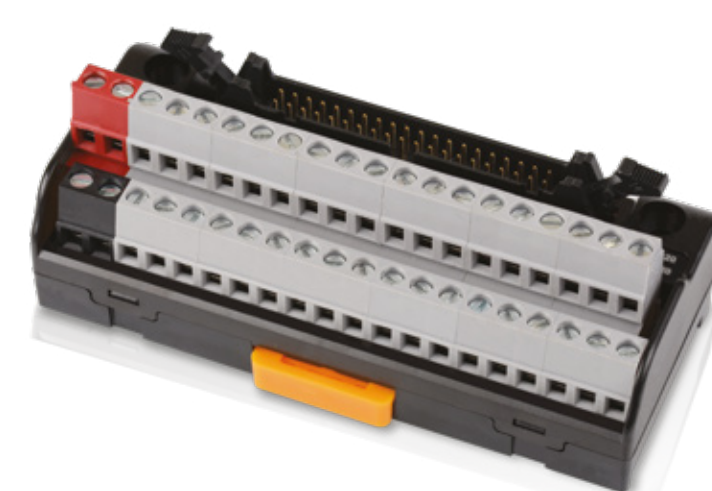
Field Network Devices

- Remote I/O
- Communication converters



I/O Terminal Blocks

- Interface terminal blocks
- Common terminal blocks
- Relay terminal blocks
- SSR terminal blocks
- Sensor connector terminal blocks



Connectors

- Sensor connectors



Valve Plugs

- Valve plugs



Distribution Boxes

- 4-pin type
- 5-pin type



Cables

- Vision sensor cables
- Photoelectric/proximity sensor cables
- Rotary encoder cables
- Area sensor cables
- I/O terminal block cables
- LP/GP cables
- Distribution box cables



Sockets

- Controller sockets



Control Switches

Autonics offers an extensive range of control switches, pilot lights, and buzzers to meet diverse user requirements. Featuring simple and sleek design with vibrant colors, the switches are aesthetically pleasing and highly durable, built to last in demanding environments.

Push Button Switches



- Push buttons (illuminated)
- Double push buttons
- Mushroom-head push buttons

Selector Switches



- Short lever
- Long lever
- Shark-head type (flush/extended/illuminated)

Key Selector Switches



- Extended
- Flush

Emergency Switches



- Emergency switches (illuminated)

Pilot Lights



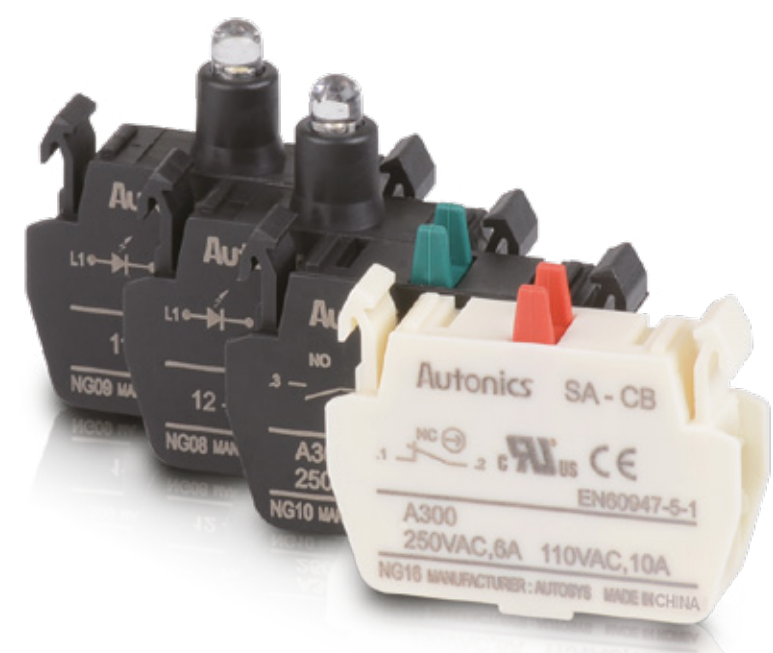
- Dome type
- Horn type
- Flat type

Buzzers



- Magnetic buzzers
- Piezo buzzers
- Melody buzzers

Accessories



- Switch contact blocks
- Switch enclosures
- Waterproof cap
- Locking ring wrench
- Emergency switch nameplates
- Emergency switch protective shroud

16 mm Control Switches



- Push Button Switches
- Selector Switches
- Key Selector Switches
- Emergency Switches
- Pilot Lights

